



Plan and the incorporation documents by September 15, 1971. The incorporation election was set for December 21, 1971, and the measure passed with a 2 to 1 margin.

First City of Irvine city council: From left to right: Gaby Prior, John Burton, Bill Fischbach, Henry Quigley, and Ray Quigley (no relation).

On December 28, 1971, the County Supervisors certified the incorporation vote, the city was registered with the state and county, and Irvine was declared the 26th city in Orange County.

For the full exhibit checklist with annotations, online exhibits, and past exhibits, please see:

exhibits.lib.uci.edu.

Design and Production
Design Services, UCI Libraries

Printed 2011. © UC Regents.

We are deeply grateful to the individuals who have established the following Named Library Funds.

Verle and Elizabeth Annis Library Endowed Fund
Research Collections in Early California History

Carole Creek Bailey Library Endowed Fund
Research Collections in Social Sciences and History

Ralph W. Gerard Library Endowed Fund
Research Collections

Forest J. and Dolores S. Grunigen Library Endowed Fund
Research Collections

Nors S. Josephson and Waltraut Abstein-Josephson Library Endowed Fund
Research Collections

Adolph Kroch Library Fund
General Support

Carl Kroch Library Endowed Fund
Library Exhibitions

Jack Langson Library Funds
General Support

Hector D. Laudati and Caroline A. Laudati Library Endowed Fund
A gift by Rosalyn M. Laudati, Ph.D. General Support

Nellie Ansley Reeves Award Library Endowed Fund
Undergraduate Research Fellowship Award

Sylvia Holden Robb Library Endowed Funds
General Support and Research Collections

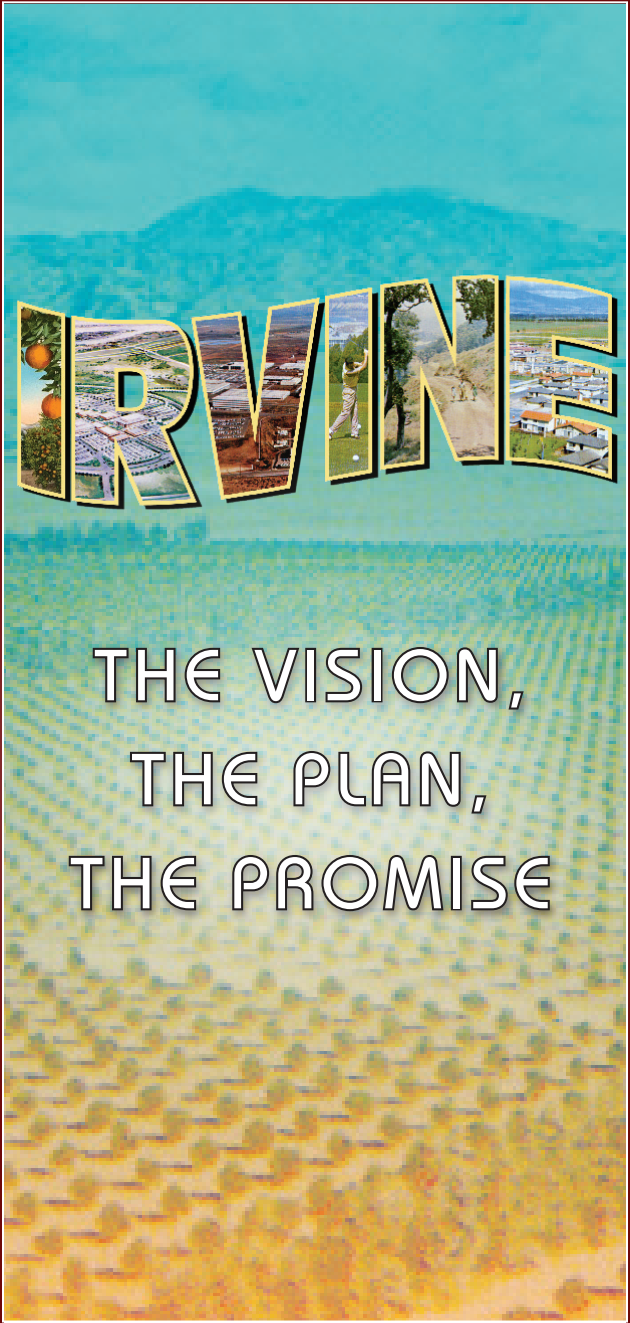
Helen Russell Library Endowed Fund
General Support

Salinger Family Library Endowed Fund
Research Collections

John and Elizabeth Stahr Library Fund
Research Collections

Raymond L. Watson Library Fund
Regional History Collections

To view a full listing of library donors, please see:
<http://partners.lib.uci.edu>. Gifts to the Libraries help preserve the past and are an investment in the future of our university, community, and State. For information about supporting the UCI Libraries, please call 949.824.4651.



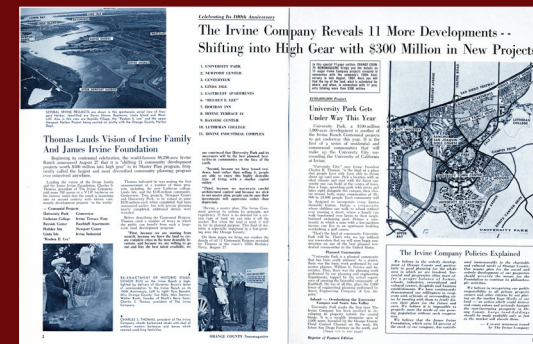
Welcome to the UC Irvine Libraries' spring 2011 exhibition, *Irvine: the Vision, the Plan, the Promise*. This exciting exhibit chronicles the origins and development of three community pillars: the City of Irvine, Irvine Company, and the University of California Irvine: and how each played a key role in the evolution of Irvine into a nationally recognized model planned community. Artifacts and planning documents from the UC Irvine Libraries' Orange County collection and papers from the Raymond L. Watson archive are on display as well as original advertisements marketing the new city. Yvonne Wilson, Research Librarian for California and Orange County Government Information, is the curator.

We are honored to have UCI's Interim Vice Chancellor for Advancement Daniel Aldrich, III, and City of Irvine Councilmember Larry Agran as the featured speakers for our exhibit opening on May 11. We are deeply grateful to Ray Watson for his generous support of the Libraries' Regional History Collections through the Watson Library Fund.

I hope you enjoy the exhibit and return to view others in the future.

Lorelei Tanji,
Interim University Librarian

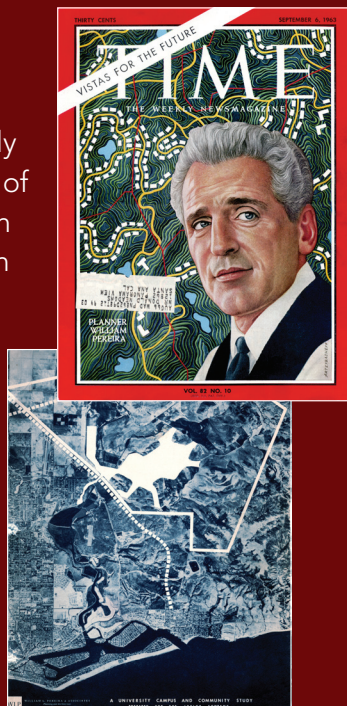
foothills and the San Diego Freeway. On March 19, 1970, the Irvine Company submitted the Irvine General Plan of 1970 to the Orange County Planning Commission. This plan covered the development of both sectors and addressed the need for a future City of Irvine.



"The Irvine Company Reveals 11 More Developments - - Shifting into High Gear with \$300 Million New Projects", [including University Park] Orange County: Newsmagazine of Life business & Industry, Education Issue, v.8 no.9, 1964, p. 2 & 3.

VISION

The Irvine Ranch, located between Los Angeles and San Diego, was strategically located to take advantage of the population explosion in post-World War II Southern California. Officials of the Irvine Company decided not to sell their land to developers, but to develop it themselves. Between the years of 1959 and 1971, the Irvine Company moved from mainly an agricultural operation to a diversified development corporation. This transformation was secured by providing 1,000-acres for the University of California,

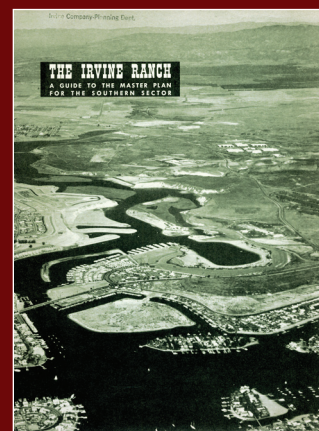


Top right: Time cover of William L. Pereira. Time, September 6, 1963. Above: A preliminary report for a university-community development in Orange County. Prepared for the Irvine Company by William L. Pereira & Associates Los Angeles, October, 1959.

Irvine, creating a community around the University and moving on to design and build the villages of Irvine.

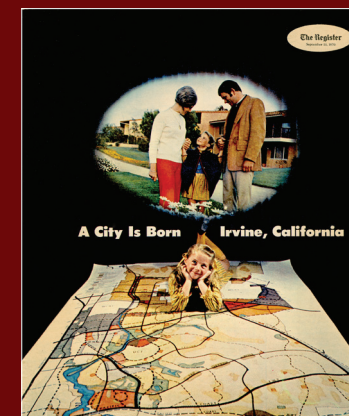
PLAN

The Irvine Company created a new land development division in 1961, which included professional planners and architects, such as Raymond L. Watson. The Irvine Company spent the 1960s planning first for the "southern sector"—35,000-acres south of the San Diego Freeway, including the University and the Irvine Industrial Complex and then the 32,000-acre "central basin" between the



The Irvine Ranch: A Guide to the Master Plan for the Southern Section. January 15, 1964.

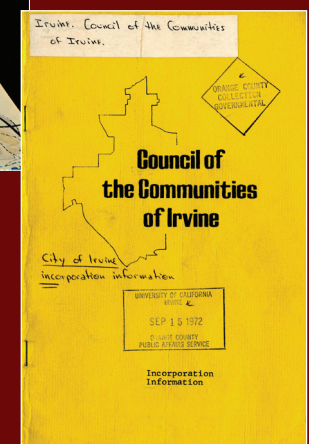
PROMISE



A City is Born Irvine, California, Register, Supplement, September 13, 1970.

Irvine citizen's group promoting city incorporation and writing the necessary documents. The County of Orange approved both the Irvine General

Formed on June 24, 1970, the Council of the Communities of Irvine was the leading



Council of the Communities of Irvine meeting notice and pamphlet on incorporation, November 1970.