

UCI Libraries

Student Displays Program

Locations and Display Equipment

CONTACT INFO

For questions about the location or equipment listed here or the UCI Libraries Student Displays Program, visit lib.uci.edu/student-displays or contact partners@uci.edu.

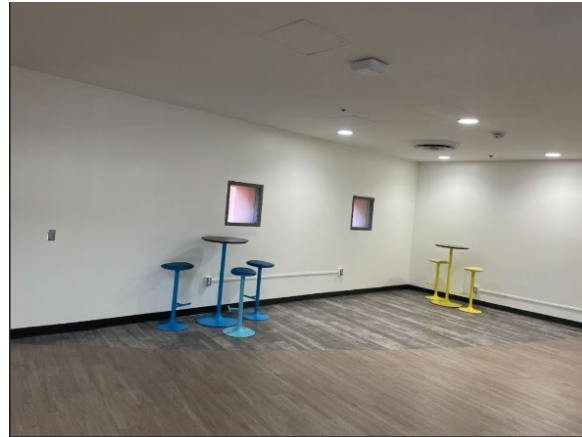
DISPLAY LOCATIONS

Langson Library, Second Floor Lobby



DISPLAY LOCATIONS *cont.*

Science Library, First Floor Lobby in Front of Elevators



Science Library, Fifth Floor Area in Front of Visualization Wall



Science Library, Fifth Floor Visualization Wall (digital displays only)

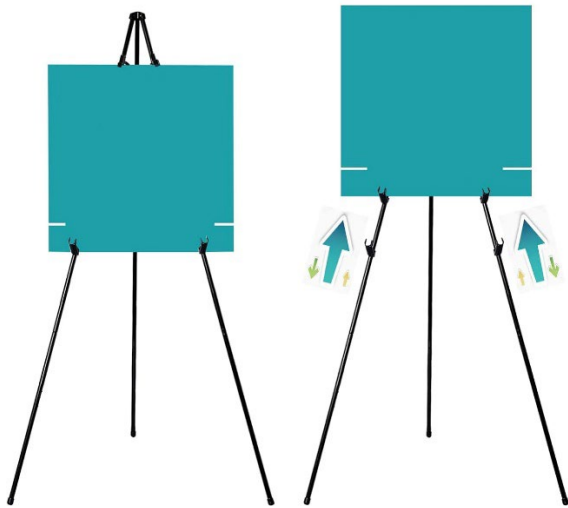


DISPLAY EQUIPMENT

The listed equipment is a representative list. Depending on the date and location of a scheduled display, not all may be available.

Easels

*12 adjustable height easels
(each holds up to 5 lbs)*



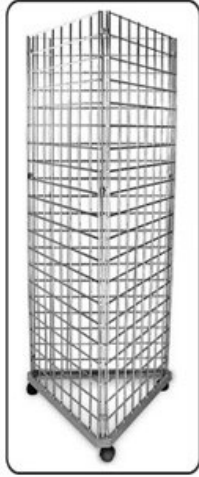
Display Case

(approx. 5 ft wide x 2 ft deep)

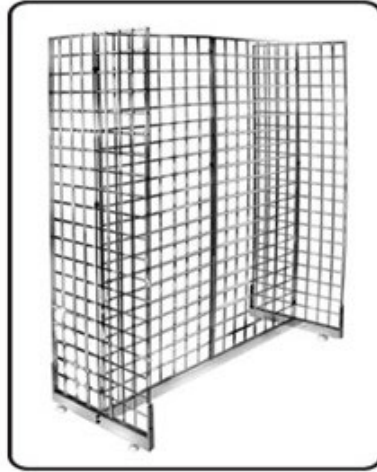


Grid Walls

*1-sided triangles (4)
(approx. 2 ft wide x 6.5 ft tall)*



*2-sided wall (1)
(approx. 2 ft deep x 4 ft wide x 6.5 ft tall)*



Grid Wall Hanging Accessories

Clips (30)



Hooks (30)



Hooks (30)



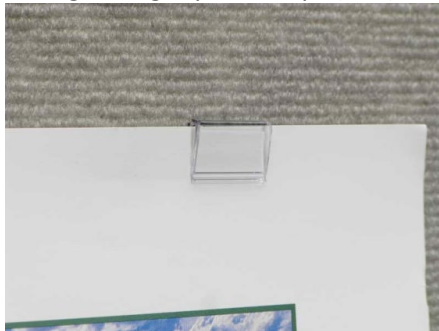
Carpeted Panel Walls

*12 dark grey portable 2-sided walls
(approx. 3 ft wide x 5.75 ft tall display area per panel)*



Carpeted Panel Wall Hanging Accessories

Lightweight poster clips (100)



Poster board supports (60)



T-pins (100)



*Anchor hangers (24)
(each holds up to 50 lbs)*

